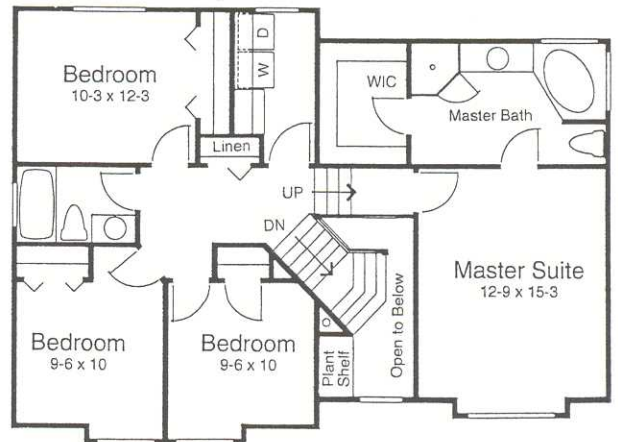




Main Floor Plan
832 sq. ft.
(Approximate room size)

Outstanding features:

- ◆ Popular, well designed 5 level home.
- ◆ Elegant 2 story entry.
- ◆ Inviting covered porch.
- ◆ Wrap around country kitchen open to sunken family room.
- ◆ Private master suite features volume ceiling, large master bath with corner jetted tub and walk in closet.
- ◆ Stucco optional



Upper Floor Plan
989 sq. ft.

TALMAGE

PLAN NO.	1781-001
Overall dimensions	41' x 38'
Total square footage	2301
4 Bedroom 2.5 Baths	

© Copyright Techni Graphic Services



Copyright: Reproduction of any portion of these plans for any purpose is strictly prohibited. Hallmark Homes reserves the right to change prices, features, and plans without notice.

