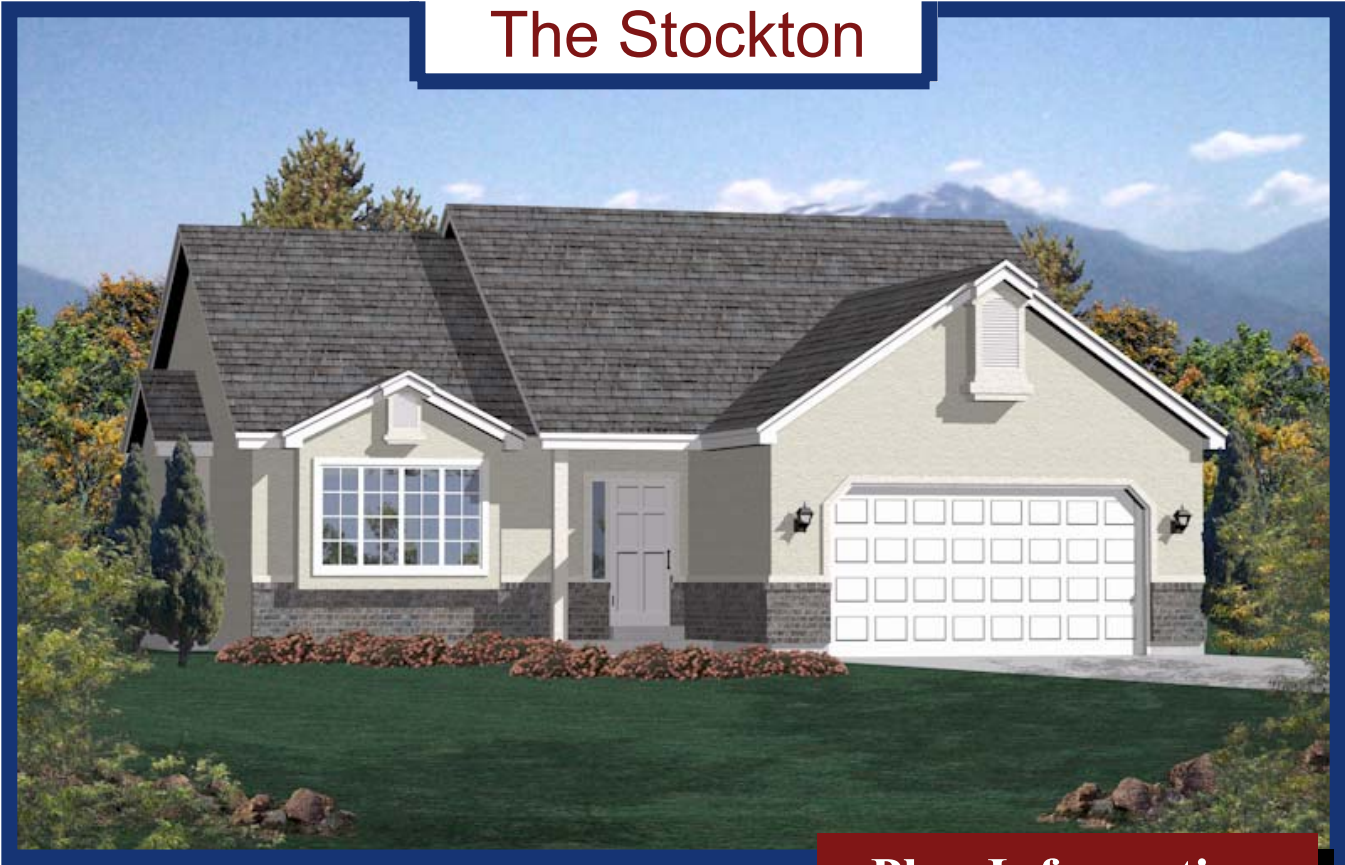
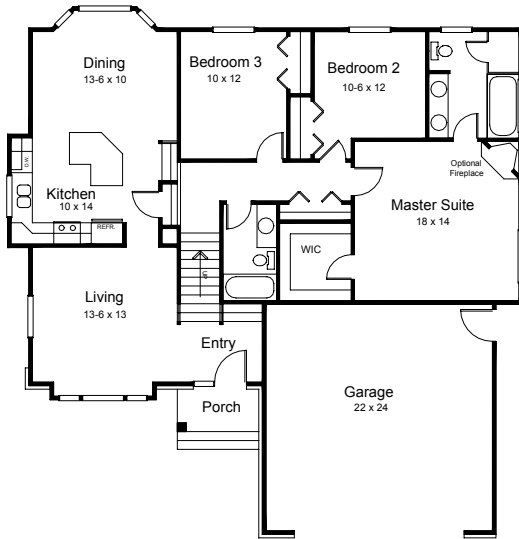


The Stockton



Plan Information

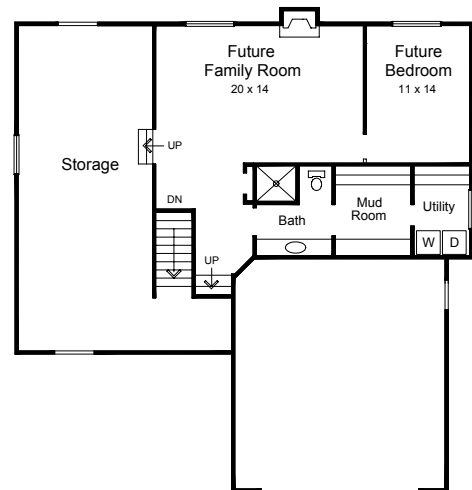
Main Floor - 1433 Square Ft (Finished)
Basement - 792 Square Ft (Unfinished)
Total Finished Square Footage - 1433
Total Square Footage - 2225
(Total Square Footage Includes Finished and Unfinished Square Footage)
Square Footages are approximate only and shall be verified by client.



MAIN LEVEL

Overall Dimensions:

48'-6" Wide x 48'-0" Deep



BASEMENT LEVEL



Our Reputation Is Building

Copyright: Reproduction of any portion of these plans for any reason is strictly prohibited. Hallmark Homes reserves the right to change prices, features, and plans without notice. Stucco shown is not standard in all subdivisions. See Agent.

