

The Manchester



Plan Information

Main Floor - 1292 Square Ft (Finished)

Basement - 1263 (Unfinished)

Total Finished Square Footage - 1292

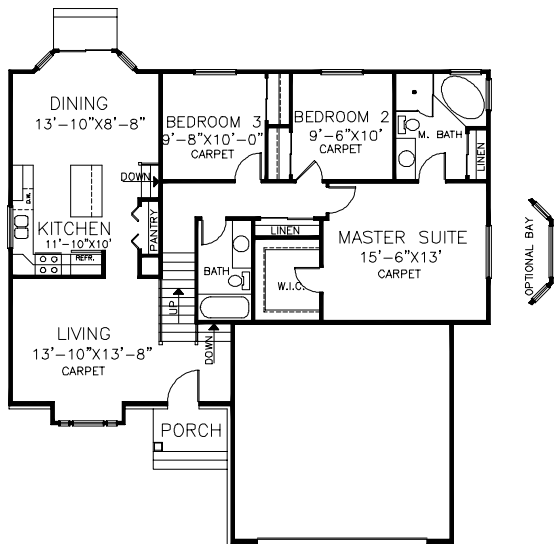
Total Square Footage - 2555

(Optional Finished Family Area 350 Square Ft.)

(Finished Square Footage w/Family = 1642)

(Total Square Footage Includes Finished and Unfinished Square Footage)

Square Footages are approximate only and shall be verified by client.



MAIN FLOOR PLAN

ROOM SIZES SHOWN ARE APPROXIMATES



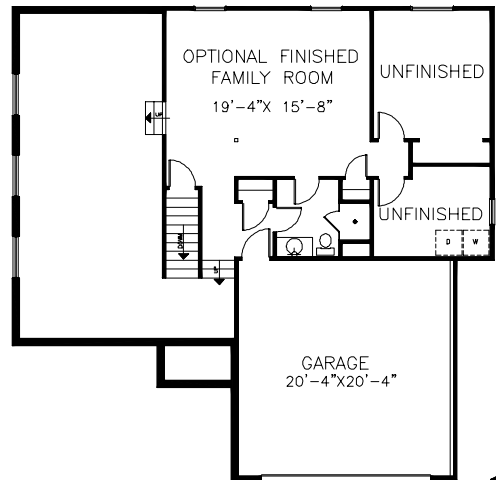
HALLMARK HOMES

Our Reputation Is Building

Copyright: Reproduction of any portion of these plans for any reason is strictly prohibited. Hallmark Homes reserves the right to change prices, features, and plans without notice. Stucco shown is not standard in all subdivisions. See Agent.

Overall Dimensions:

45'-6" Wide x 45'-0" Deep



BASEMENT PLAN

ROOM SIZES SHOWN ARE APPROXIMATES
BASEMENT IS SHOWN AS UNFINISHED

