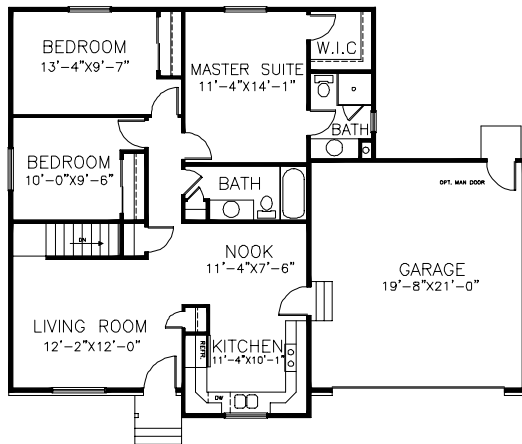


The Hampton II



Plan Information

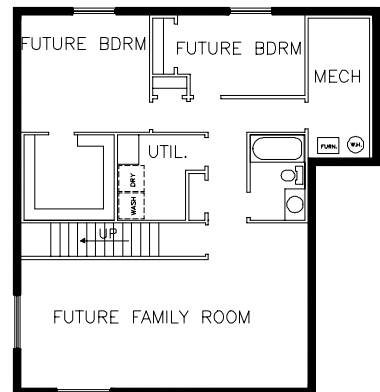
Main Floor - 1118 Square Ft (Finished)
Basement - 1004 (Unfinished)
Total Finished Square Footage - 1118
Total Square Footage - 2122
(Total Square Footage Includes Finished and Unfinished Square Footage)
Square Footages are approximate only and shall be verified by client.



MAIN FLOOR PLAN
ROOM SIZES SHOWN ARE APPROXIMATES

Overall Dimensions:

48'-0" Wide x 38'-0" Deep



BASEMENT PLAN

ROOM SIZES SHOWN ARE APPROXIMATES
 BASEMENT IS SHOWN AS UNFINISHED

HALLMARK HOMES

Our Reputation Is Building

Copyright: Reproduction of any portion of these plans for any reason is strictly prohibited. Hallmark Homes reserves the right to change prices, features, and plans without notice. Stucco shown is not standard in all subdivisions. See Agent.

