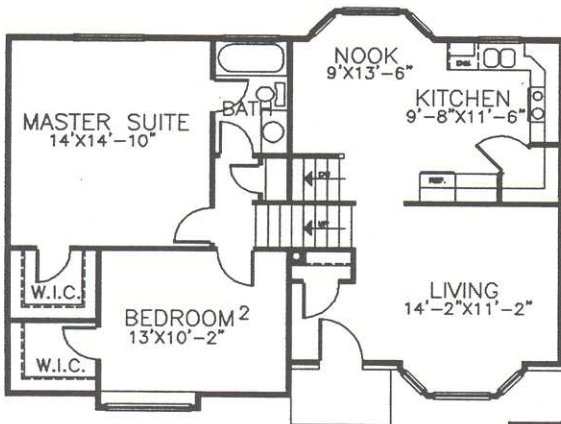


THE CONCORD

(1190)



FRONT ELEVATION



MAIN FLOOR PLAN

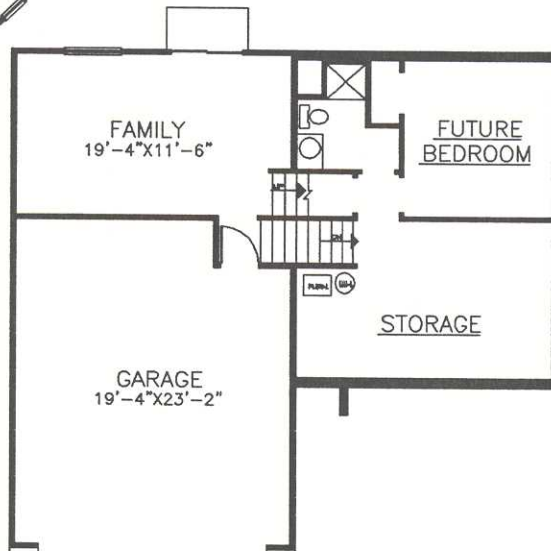
ROOM SIZES SHOWN ARE APPROXIMATES

Overall Dimensions:
39'-0" Wide x 27'-0" Deep

Finished Square Footage:
1011 sq. ft.

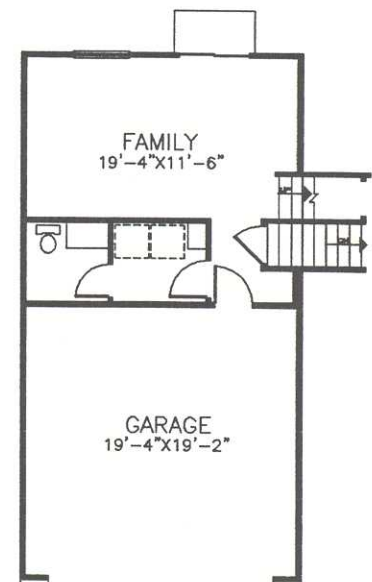
PLAN INFORMATION:

MAIN FLOOR = 1011 SQUARE FEET (FINISHED)
 BASEMENT = 732 (UNFINISHED)
 TOTAL FINISHED SQUARE FOOTAGE = 1011
 TOTAL SQUARE FOOTAGE = 1743
 (TOTAL SQUARE FOOTAGE INCLUDES FINISHED AND UNFINISHED SQUARE FOOTAGE)
 SQUARE FOOTAGES ARE APPROXIMATE ONLY AND SHALL BE VERIFIED BY CLIENT



BASEMENT PLAN

ROOM SIZES SHOWN ARE APPROXIMATES
 BASEMENT IS SHOWN AS UNFINISHED



OPTIONAL 1/2 BATH



HALLMARK HOMES

Copyright: Reproduction of any portion of these plans for any purpose is strictly prohibited. Hallmark Homes reserves the right to change prices, features, and plans without notice.



12/01